



Free Crochet Pattern
Lion Brand® Touch of Alpaca™
Soft Shaded Afghan
Pattern Number: L80095
Designed by Teresa Chorzepa



SKILL LEVEL – Easy+

SIZE

About 45 x 59 in. (114.5 x 150 cm)

MATERIALS

- Lion Brand® Touch of Alpaca™ (Art. #674)
 - 098 Cream 7 balls (A)
 - 108 Dusty Blue 1 ball (B)
 - 158 Goldenrod 2 balls (C)
 - 123 Taupe 1 ball (D)
 - 150 Oxford Grey 1 ball (E)
- Lion Brand® crochet hook size I-9 (5.5 mm)
- Lion Brand® large-eyed blunt needle



GAUGE

15 pattern reps = about 11 in. (28 cm); 8 rows = about 4 in. (10 cm).

Note: One pattern rep consists of one 3-dc Cl and the following ch-1 space or 2 hdc and the following ch-1 space.

BE SURE TO CHECK YOUR GAUGE.

STITCH EXPLANATIONS

beg Cl (beginning crochet cluster) Ch 2, yarn over, insert hook in indicated st and draw up a loop, yarn over and draw through 2 loops on hook (2 loops rem on hook); yarn over and draw through rem 2 loops on hook.

2-dc Cl (2 double crochet cluster) Yarn over, insert hook in indicated st and draw up a loop, yarn over and draw through 2 loops on hook (2 loops rem on hook), yarn over, insert hook in *same* st and draw up a loop, yarn over and draw through 2 loops on hook (3 loops rem on hook), yarn over and draw through all loops on hook.

3-dc Cl (3 double crochet cluster) Yarn over, insert hook in indicated st, yarn over and draw up a loop, yarn over and draw through 2 loops on hook (2 loops rem on hook), (yarn over, insert hook in *same* st, yarn over and draw up a loop, yarn over and draw through 2 loops on hook) twice; yarn over and draw through all 4 loops on hook.

NOTES

1. Afghan is worked in one piece, back and forth in alternating rows of (cluster, ch 1) and (2 hdc, ch 1).
2. Two rows are worked with the RS facing and two rows are worked with the WS facing.
3. The yarn color is changed every row. To change yarn color, drop the loop of old color from hook, elongate loop or place it on a stitch marker or safety pin so it does not unravel. At next color change, return indicated dropped loop to hook and gently tighten loop around hook.
4. For those who find a visual helpful, we've included a stitch diagram.

For thousands of free patterns, visit our website www.LionBrand.com

To order visit our website www.lionbrand.com or call: (800) 258-YARN (9276) any time!

Copyright ©1998-2018 Lion Brand Yarn Company, all rights reserved.

No pattern or other material may be reproduced -- mechanically, electronically, or by any other means, including photocopying - without written permission of Lion Brand Yarn Company.

AFGHAN

With B, ch 184.

Row 1 (RS): With B, 2 hdc in 3rd ch from hook (2 skipped ch count as hdc), *ch 1, sk next 2 ch, 2 hdc in next ch; rep from * to last ch, hdc in last ch, drop loop from hook – you will have sixty-one 2-hdc groups, 60 ch-1 sps, and 1 hdc at beg and end of row.

Row 2 (RS): From RS, draw up a loop of A in top of beg ch-2, beg-Cl in same ch, *ch 1, sk next 2 hdc, 3-dc Cl in next ch-1 sp; rep from * to last 3 hdc, ch 1, sk next 2 hdc, 2-dc Cl in last hdc, drop loop from hook – Sixty 3-dc Cl, 61 ch-1 sps, a beg-Cl at beg of row, and a 2-dc Cl at end of row.

Row 3 (WS): From WS, return dropped loop of B to hook, ch 3, sl st in top of first 2-dc Cl, ch 2 (counts as hdc), 2 hdc in next ch-1 sp, *ch 1, sk next cluster, 2 hdc in next ch-1 sp; rep from * to beg-Cl, hdc in beg-Cl, drop loop from hook – Sixty-one 2-hdc groups, 60 ch-1 sps, and 1 hdc at beg and end of row.

Row 4 (WS): From WS, return dropped loop of A to hook, ch 2, sl st in top of beg ch-2, beg-Cl in same st, *ch 1, sk next 2 hdc, 3-dc Cl in next ch-1 sp; rep from * to last 3 hdc, ch 1, sk next 2 hdc, 2-dc Cl in last hdc, drop loop from hook – sixty 3-dc Cl, 61 ch-1 sps, a beg-Cl at beg of row, and a 2-dc Cl at end of row.

Row 5 (RS): From RS, return dropped loop of B to hook, ch 3, sl st in top of first 2-dc Cl, ch 2 (counts as hdc), 2 hdc in next ch-1 sp, *ch 1, sk next cluster, 2 hdc in next ch-1 sp; rep from * to beg-Cl, hdc in beg-Cl, drop loop from hook – Sixty-one 2-hdc groups, 60 ch-1 sps, and 1 hdc at beg and end of row.

Row 6 (RS): From RS, return dropped loop of A to hook, ch 2, sl st in top of beg ch-2, beg-Cl in same st, *ch 1, sk next 2 hdc, 3-dc Cl in next ch-1 sp; rep from * to last 3 hdc, ch 1, sk next 2 hdc, 2-dc Cl in last hdc, drop loop from hook – sixty 3-dc Cl, 61 ch-1 sps, a beg-Cl at beg of row, and a 2-dc Cl at end of row.

Rows 7-22: Rep Rows 3-6 for 4 more times.

Row 23 (WS): Rep Row 3.

Fasten off B.

Row 24 (WS): With A, rep Row 4.

Row 25 (RS): From RS, draw up a loop of C in top of first 2-dc Cl, ch 2 (counts as hdc), 2 hdc in next ch-1 sp, *ch 1, sk next cluster, 2 hdc in next ch-1 sp; rep from * to beg-Cl, hdc in beg-Cl, drop loop from hook – Sixty-one 2-hdc groups, 60 ch-1 sps, and 1 hdc at beg and end of row.

Row 26 (RS): With A, rep Row 6.

Row 27 (WS): With C, rep Row 3.

Row 28 (WS): With A, rep Row 4.

Row 29 (RS): With C, rep Row 5.

Row 30 (RS): With A, rep Row 6.

Row 31 (WS): With C, rep Row 3.

Rows 32-47: Rep Rows 28-31 for 4 more times.

Fasten off C.

Rows 48-71: Using A for even-numbered rows and D for odd-numbered rows, rep Rows 24-47.

Fasten off D.

For thousands of free patterns, visit our website www.LionBrand.com

To order visit our website www.lionbrand.com or call: (800) 258-YARN (9276) any time!

Copyright ©1998-2018 Lion Brand Yarn Company, all rights reserved.

No pattern or other material may be reproduced -- mechanically, electronically, or by any other means, including photocopying - without written permission of Lion Brand Yarn Company.

Rows 72-95: Using A for even-numbered rows and C for odd-numbered rows,
rep Rows 24-47.

Fasten off C.

Rows 96-119: Using A for even-numbered rows and E for odd-numbered rows,
rep Rows 24-47.

Fasten off A and E.

FINISHING

Weave in ends.

ABBREVIATIONS

beg = begin(ning)

ch = chain

ch-sp(s) = chain space(s) previously made

hdc = half double crochet

rem = remain(ing)(s)

rep(s) = repeat(s)

RS = right side

sk = skip

st(s) = stitch(es)

WS = wrong side

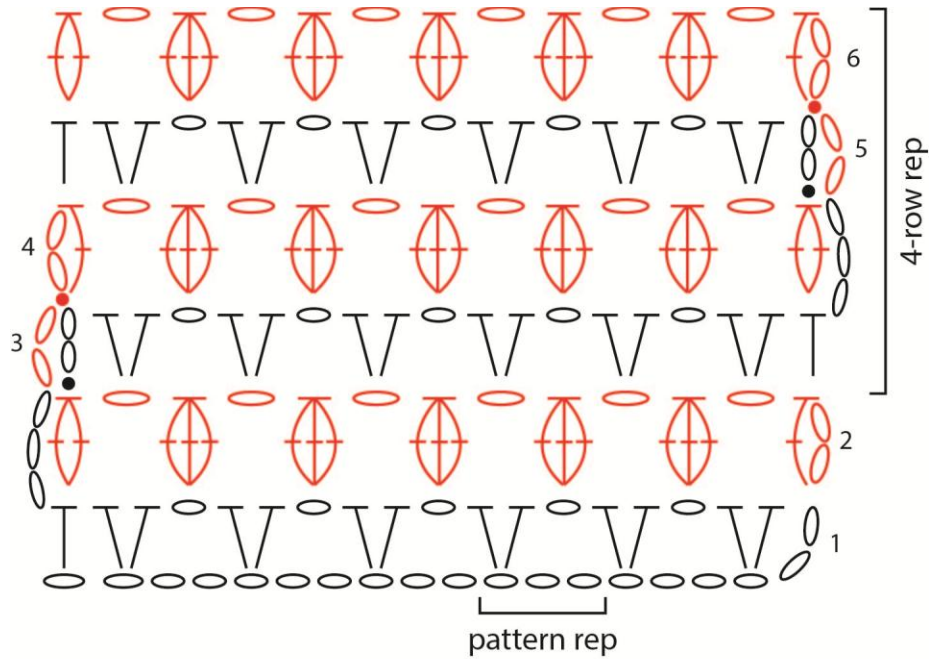
Every effort has been made to produce accurate and complete instructions. We cannot be responsible for variance of individual crafters, human error, or typographical mistakes.

For thousands of free patterns, visit our website www.LionBrand.com

To order visit our website www.lionbrand.com or call: (800) 258-YARN (9276) any time!

Copyright ©1998-2018 Lion Brand Yarn Company, all rights reserved.

No pattern or other material may be reproduced -- mechanically, electronically, or by any other means, including photocopying - without written permission of Lion Brand Yarn Company.



KEY	
●	= slip stitch (sl st)
○	= chain (ch)
┆	= half double crochet (hdc)
⌈	= 2-double crochet cluster (2-dc Cl)
⌈	= 3-double crochet cluster (3-dc Cl)
⌈	= beginning cluster (beg 2-dc Cl)