

Anchor[®]



XOXO Baby Blanket



AnchorCrafts.com

   @anchorcrafting

Designed by Heather C Gibbs

Design No.: ANC0003-76

Heather C Gibbs, 2020. All Rights Reserved.

ANC0003-76 XOXO Baby Blanket

Anchor Baby Pure Cotton 50 g Art. No. 4804000-*(colour n°)

Crochet



7 x *00398

Easy



N° 3.5mm



76cm x 76cm (30" x 30")



XOXO Baby Blanket

GAUGE:

5htr = 2.5cm / 1inch

ABBREVIATIONS

cm – Centimetre

ch – Chain

sl st – Slip Stitch

sp – Space

htr – Half treble Crochet

tr – Treble crochet

PC – Popcorn

(...) – should be worked in 1sp

[...] – repeat information in brackets

SPECIAL STITCHES

Popcorn (PC): Work 5 tr in indicated st, remove hook completely, insert hook in 1st tr (1st tr of the 5), insert hook in loop that you just removed your hook from (5th tr of the 5), yarn over and pull through both loops on hook.

'O' MOTIF: make 12

Note: The ch1 at the start of each row does not count as a st

Row 1: (RS) Ch26, 1htr in second ch from the hook and in each st along, turn. (25sts).

Row 2: Ch1, 1htr in each st along, turn.

Row 3: Ch1, 1htr in the next 10 sts, 1 PC in the next, 1htr in the next 3 sts, 1 PC in the next, 1htr in the remaining 10 sts, turn.

Row 4: Ch1, 1htr in each st along until end, turn.

Row 5: Ch1, 1htr in the next 7 sts, 1 PC in the next, 1htr in the next 9 sts, 1 PC in the next, 1htr in the remaining 7 sts, turn.

Row 6: Ch1, 1htr in each st along until end, turn.

Row 7: Ch1, 1htr in the next 4 sts, 1 PC in the next, 1htr in the next 15 sts, 1 PC in the next, 1htr in the remaining 4 sts, turn.

Row 8: Ch1, 1htr in each st along until end, turn.

Row 9: repeat row 7

Row 10: repeat row 6

Row 11: repeat row 7

Row 12: repeat row 6

Row 13: repeat row 5

Row 14: repeat row 6

Row 15: repeat row 3

Row 16-17: repeat row 2 on the last row finish off and weave in ends.

'X' MOTIF: make 13

Note: The ch1 at the start of each row does not count as a st

Row 1: (RS) Ch26, 1htr in second ch from the hook and in each st along, turn. (25sts).

Row 2: Ch1, 1htr in each st along, turn.

Row 3: Ch1, 1htr in the next 6 sts, 1 PC in the next, 1htr in the next 11 sts, 1 PC in the next, 1htr in the remaining 6 sts, turn.

Row 4: Ch1, 1htr in each st along until end, turn.

Row 5: Ch1, 1htr in the next 8 sts, 1 PC in the next, 1htr in the next 7 sts, 1 PC in the next, 1htr in the remaining 8 sts, turn.

Row 6: Ch1, 1htr in each st along until end, turn.

Row 7: Ch1, 1htr in the next 10 sts, 1 PC in the next, 1htr in the next 3 sts, 1 PC in the next, 1htr in the remaining 10 sts, turn.

Row 8: Ch1, 1htr in each st along until end, turn.

Row 9: Ch1, 1htr in the next 12 sts, 1 PC in the next st, 1htr in the remaining 12 sts, turn.

Row 10: repeat row 8

Row 11: repeat row 7

Row 12: repeat row 6

Row 13: repeat row 5

Row 14: repeat row 4

Row 15: repeat row 3

Row 16-17: repeat row 2 on the last row finish off and weave in ends.

BORDER:

Make a panel of alternating 'X' and 'O' motifs of 5 squares down and 5 squares across by whip-stitching each of your squares together.

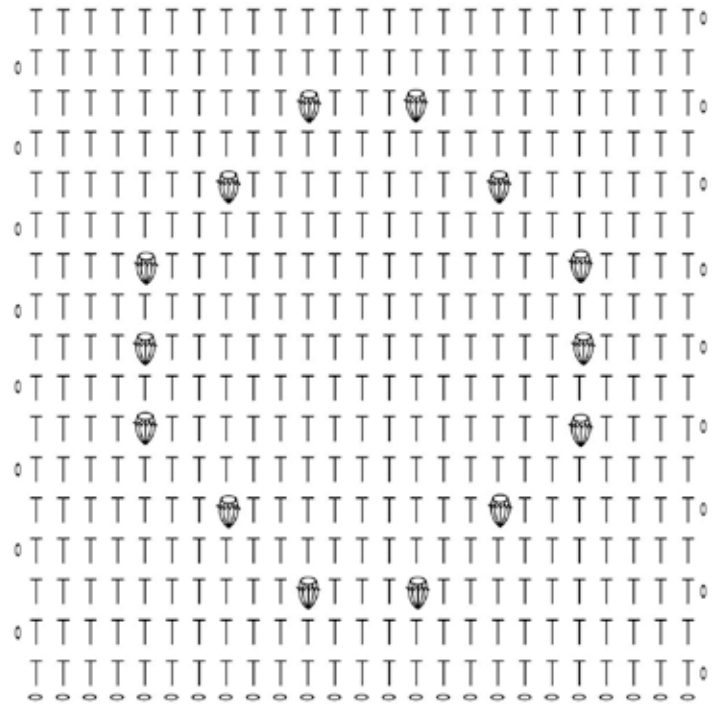
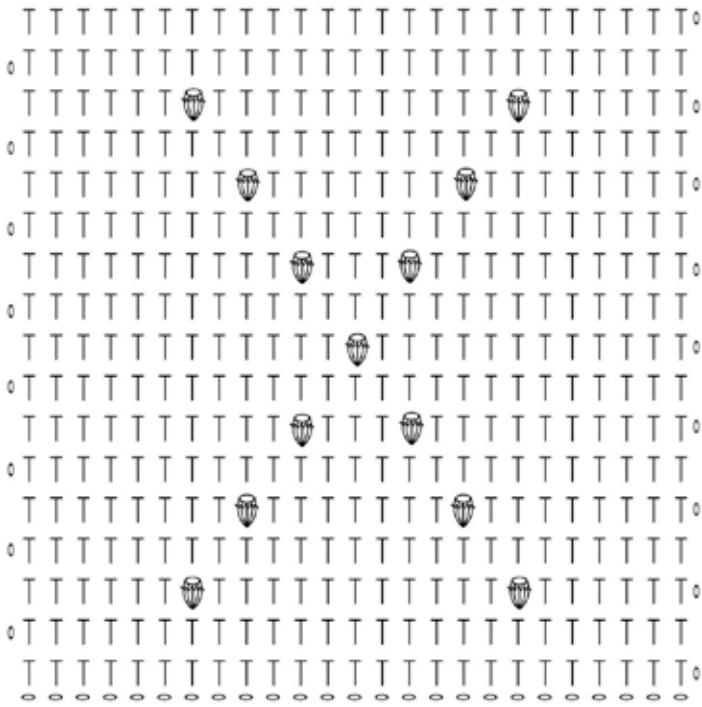
Rnd 1: Starting on the right side of your work (popcorns facing upwards); Join yarn with sl st to the top right-hand edge of one panel, ch2 (counts as htr here and throughout), [htr in each st, working htr2tog over each join and (htr, ch3, htr) in each corner] until end, sl st to the top of the beginning ch2 to join, turn

Rnds 2 - 6: Ch2 (counts as htr here and throughout), [htr in each st, working and (htr, ch3, htr) in each corner] until end, sl st to the top of the beginning ch2 to join, turn

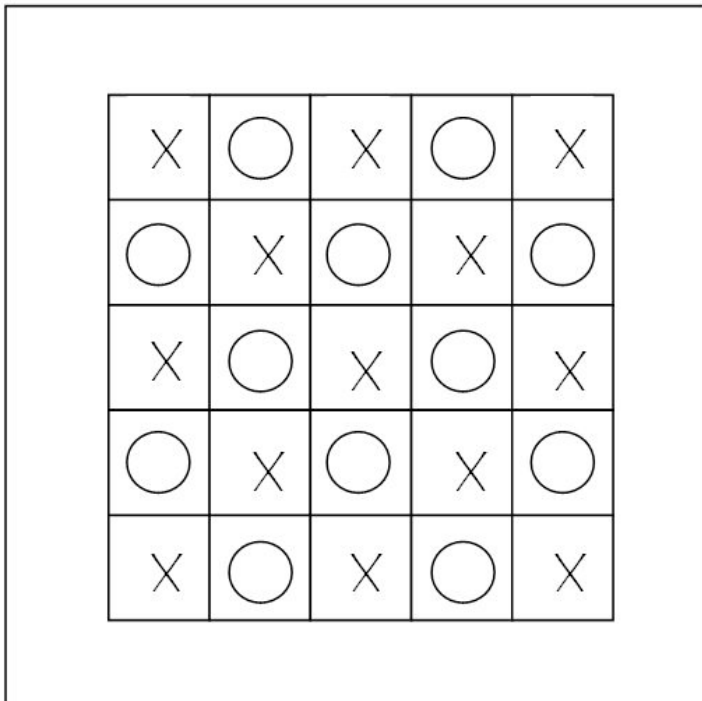
Rnd 7: Ch3 (counts as tr here and throughout), tr in each st, working 5tr in each corner until end, sl st to the top of the beginning ch3 to join, turn

Rnds 8 - 9: Ch3, fp tr in the next st, bp tr in the next st until end, sl st to the top of the beginning ch3 to join, turn

MOTIF CHARTS:



BLANKET SCHEMATIC



WASHING ADVICE

Always wash in as warm a water temperature as possible - up to the temperature recommended, with a short spin. Use a lot of water if hand washing. For darker colours we recommend the use of discolouration sheets.
 Do not Bleach.
 Do not tumble dry. Drip-dry on a horizontal surface.
 Iron on a hot temperature setting using a damp cloth.
 Professional dry cleaning in tetrachloroethylene.
 Do not use optical brighteners (or any detergent containing optical brighteners).
 We recommend to use a softener to preserve the natural softness of the yarn.